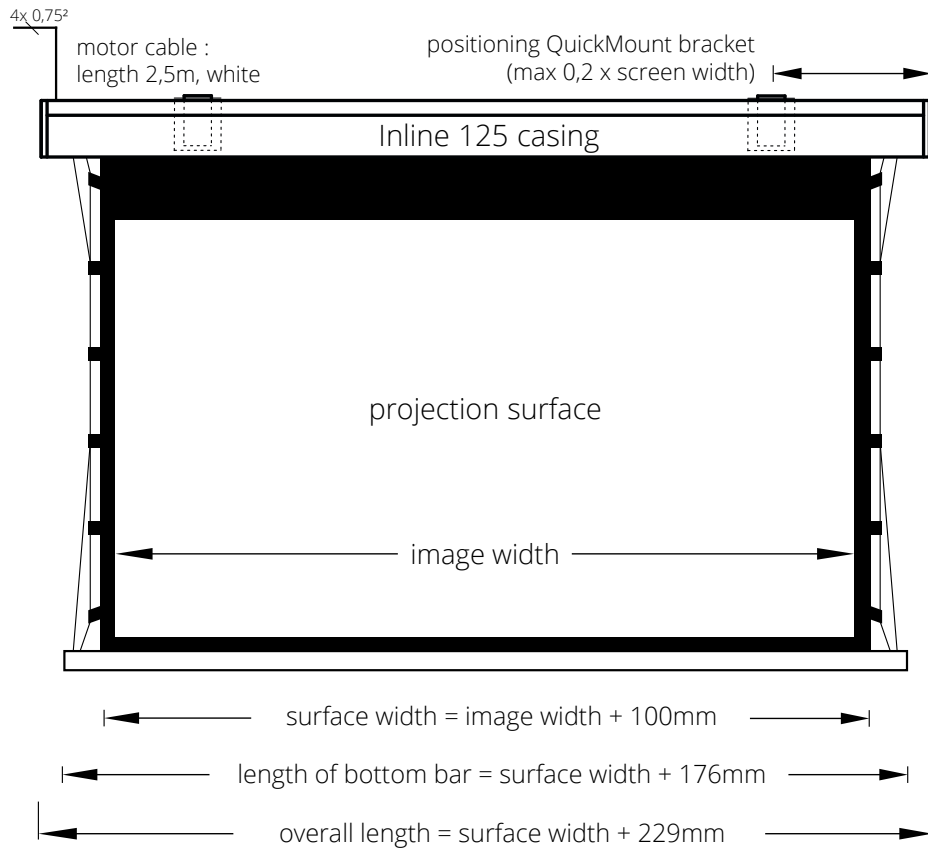


INLINE 125 TENSIONED QM-VA

FABRIC UNWINDS FRONT



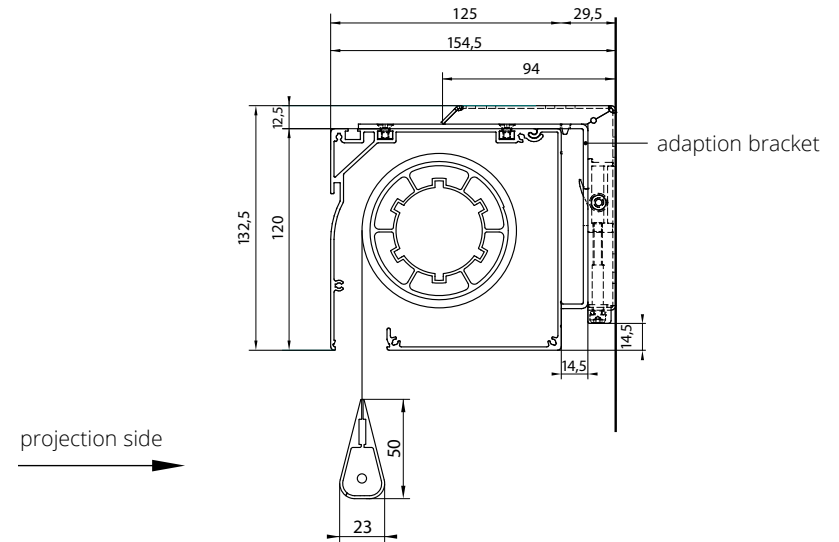
Dimensions of the Projection Screen



overall length: +/- 2mm

The QuickMount-brackets can be fixed within the mounting area (0,2x casing length) at any position on wall or ceiling. The adaption brackets have to be mounted according to the QuickMount positioning on top of the casing by clamp bars and 6 screws each. The projection screen can be hooked onto the QuickMount brackets via these adaption brackets and secured.

Cross-section Inline-QuickMount



QuickMount Bracket

for wall or ceiling mounting

