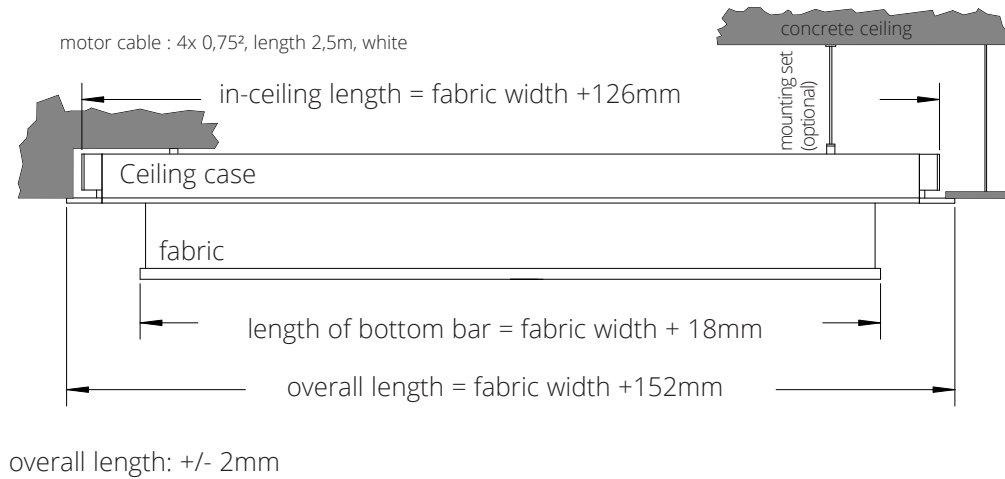


INLINE 90 DEK CEILING CASE

Dimensions of the Projection Screen



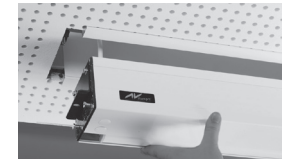
The recessed ceiling case can be pre-installed during building works.

Installation of roll-up screen at the end of building works.

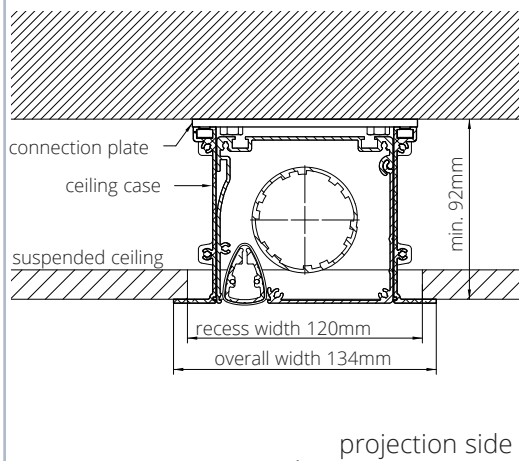
Clip brackets complete the installation and gives a perfect flat appearance.

RECESS FOR SUSPENDED CEILING:

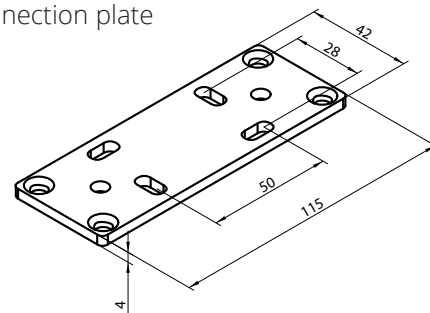
In case of subsequent mounting a recess has to be made according to the sketch below.



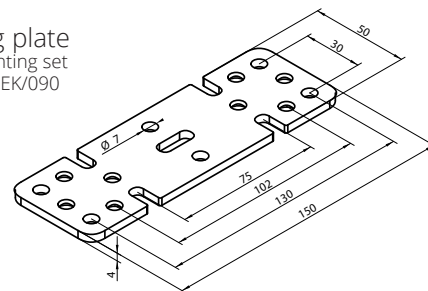
Cross Section Ceiling case INLINE 90



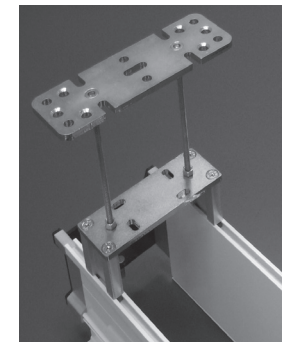
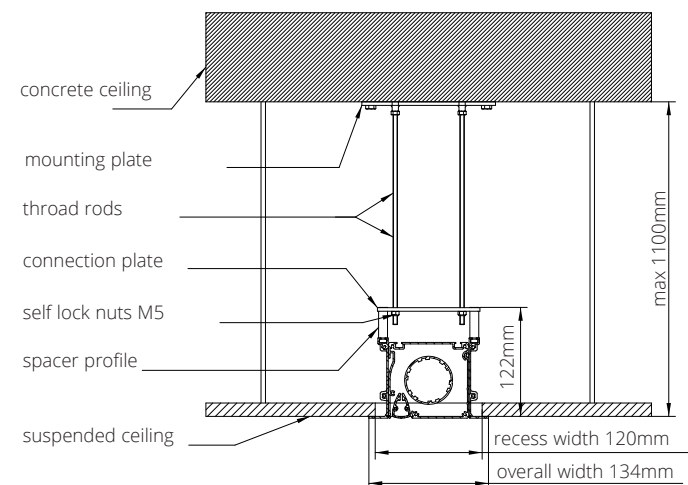
Connection plate



Ceiling plate for mounting set BIZ-MSDEK/090



Cross Section Ceiling case with mounting set BIZ-MSDEK/090



Thread rods (100cm) enable a continuously adjustment to the ceiling level