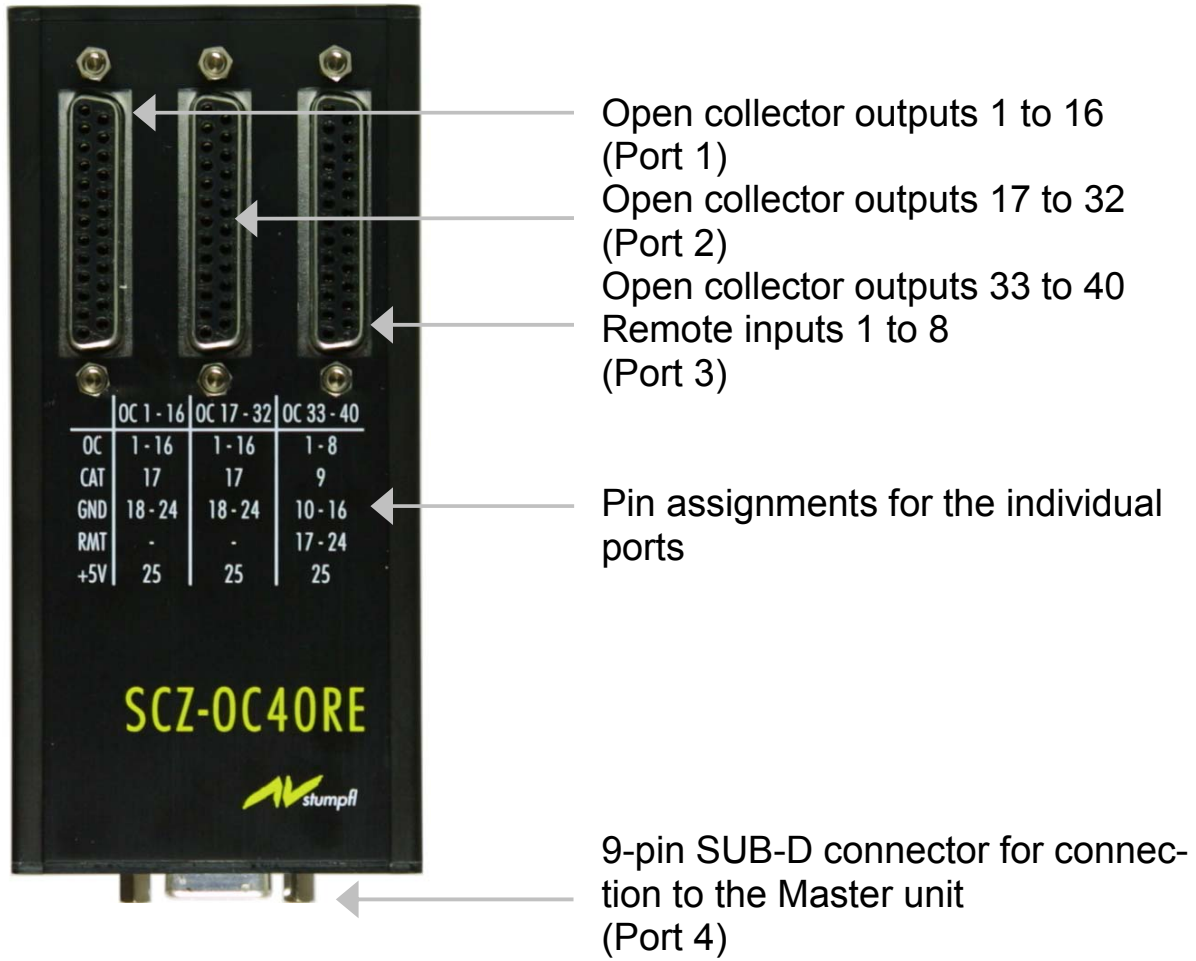

Open Collector

- 40 -

Remote Extension

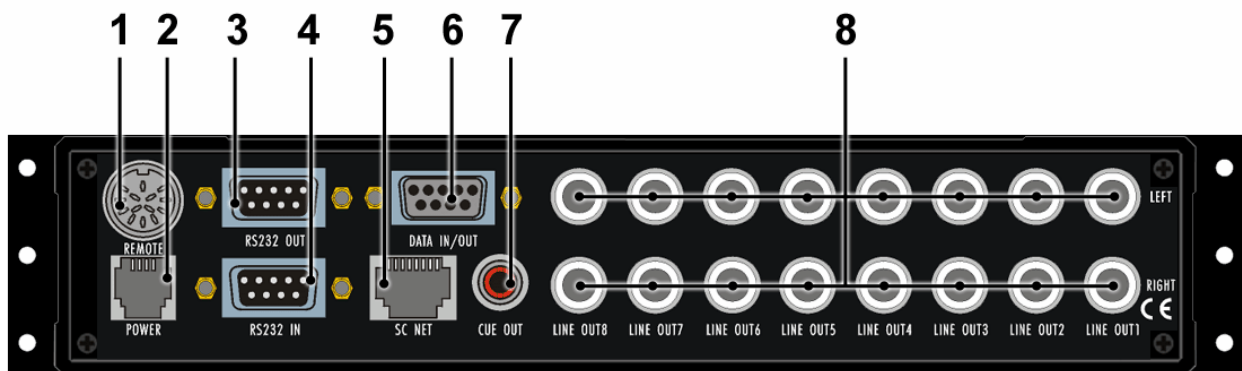


FRONT AND REAR VIEWS



CONNECTION AND SET-UP

The Open Collector – 40 - Remote Extension is equipped with a nine-pin SUB-D connector (port 4) at one side which is connected to the DATA IN/OUT (6) port on the SC MASTER. In order to provide for a trouble-free connection we advise you to tighten the screws when attaching the connectors to the units. Use the supplied 25-pin D-SUB connector to connect your control lines to the Open Collector – 40 – Remote Extension. The circuit diagram and the detailed pin assignment can be found at the end of this document.



ATTENTION:

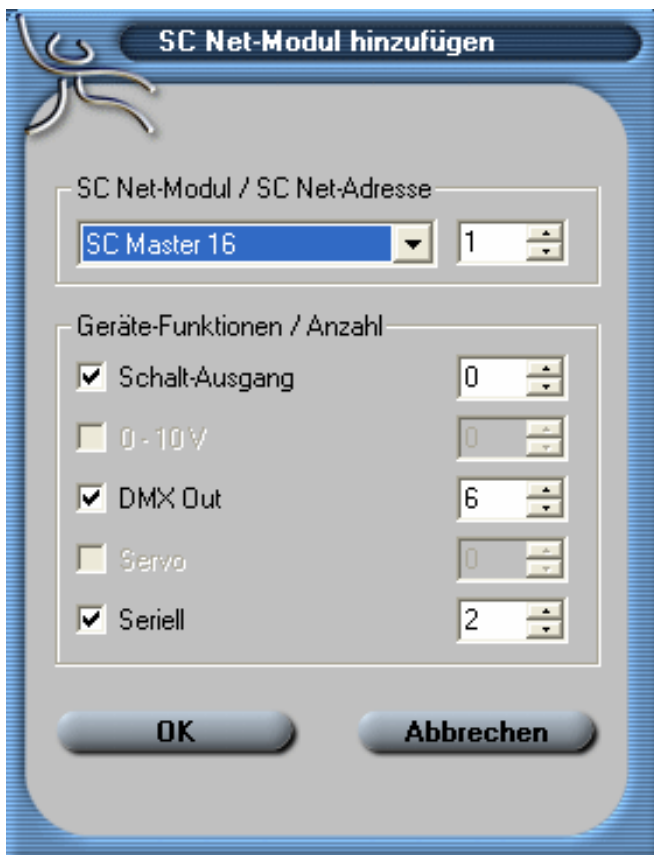
Make sure that the following SC Master settings are made!
Go to **Menu** and **Options**. Following this, select item **DataIO** and select **OC40Rmt**. Confirm with Enter. Now exit the menu again. Switch off the device and on again. Now your SC Master has been programmed for the **Open Collector 40 Remote Extension**.

PROGRAMMING AND SHOW START

Programming the switch outputs:

Configuring and assigning switch outputs

1. Click tab **Devices** in the Media Pool .
2. Unless a device port has been specified, add a port for **Stumpfl SC Net**. ..See Wings Platinum Help.
3. To do so, right-click the device port and select **Add SC Net Module...**
4. Start by choosing the corresponding SC Master unit.

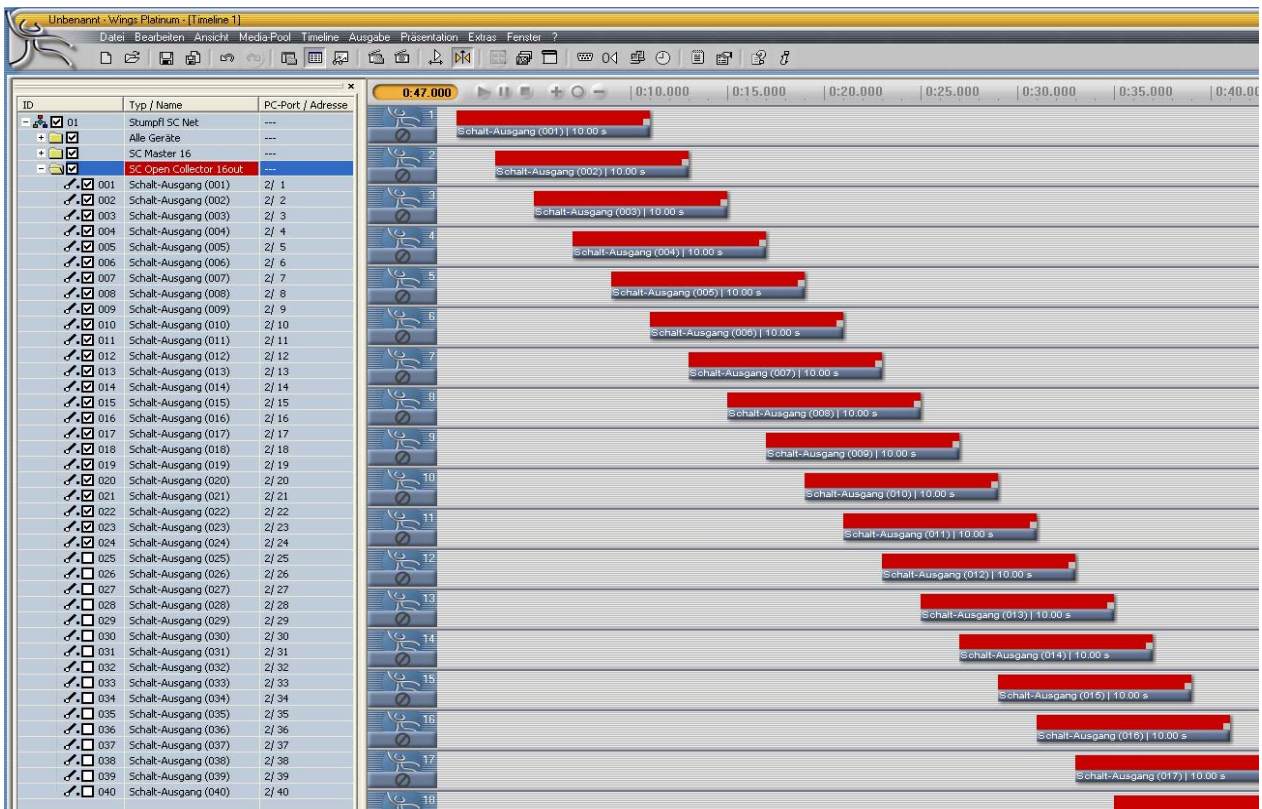


5. Close the dialog by clicking on **OK**.
6. To do so, right-click the device port and select **Add SC Net Module...**
7. Select **SC Open Collector 16out**.

8. For **Switch output** enter "40" and make sure that the **SC Net Address** is "2".



9. Close the dialog by clicking on **OK**.
10. It may be useful to choose appropriate names for the switches, e.g. "Screen up", "Screen down", etc. Right-click **Switch output**, select **Properties** and enter the corresponding name.
11. Now grab a switch with the mouse and drag it into a universal track. If no universal track is available yet or if the switch is to be moved to a new track, drag it into the empty timeline space below the tracks. A new universal track will automatically be created .



For older **Wings Platinum** versions the maximum selectable number of switch outputs for the **SC Open Collector 16out** may be 16. If this is the case, configure an **SC Open Collector 16out Module** with 16 switch outputs. Right-click the configured device port and select **Add devices**. Check checkbox **Switch output** and enter **"24"** for **Number** and **"2"** for the **SC Net Address**. Close the dialog by clicking on **OK**.



Attention:
When assigning addresses to further **SC NET Modules**, bear in mind that **SC NET address 2** cannot be used a second time!

Show start:

Double-click the corresponding card directory and open the dialog for **FlashCard settings**.





The Remote inputs of the **Open Collector – 40 - Extension** correspond to **Remote inputs 1 - 8** in the dialog for FlashCard settings. Highlight the corresponding **Remote input**. In column **Show** click on the entry field, enter the corresponding show number and press **Enter**. In column **Mode** right-click the entry field and select the corresponding mode for the remote behaviour of the show.

- **Normal** ...normal show start, the running show is not interrupted
- **Interrupt** ...show start interrupts any show being played back.
- **Terminate** ...show start terminates only other shows but not itself.
- **Add** ...added start; show is run simultaneously in addition to the running show. With the SC Master 6/16 a maximum of 18 shows can be run simultaneously. For all other SC Master units the maximum is 6 shows.
- **Restart** ...a running show is started again from the beginning, other shows continue (...just like **Add**).
- **End** ...terminates playback of a show. Is used for terminating specific shows; other shows continue.
- **Continue** ...continues the selected show, when it is waiting at a Pause Marker or an X-time.
- **Continue all** ...continues all shows that are waiting at Pause Markers or X-times.
- **Memory** ...a show is preselected and started automatically at the end of the running show.

You can define whether a show is to start upon closing or opening a switching contact. Right-click column **Trigger** and select **Close** or **Open**. When you choose **Close/Open**, the Show specified in column **Show** will be started upon closing the contact while the show specified in column **Show2** will be started upon opening the contact.

Circuit diagram and pin assignment:

25-pin D-SUB connector:

Pin	Port 1	Port 2	Port 3
1	OC 1	OC 17	OC 33
2	OC 2	OC 18	OC 34
3	OC 3	OC 19	OC 35
4	OC 4	OC 20	OC 36
5	OC 5	OC 21	OC 37
6	OC 6	OC 22	OC 38
7	OC 7	OC 23	OC 39
8	OC 8	OC 24	OC 40
9	OC 9	OC 25	Cathode
10	OC 10	OC 26	GND
11	OC 11	OC 27	GND
12	OC 12	OC 28	GND
13	OC 13	OC 29	GND
14	OC 14	OC 30	GND
15	OC 15	OC 31	GND
16	OC 16	OC 32	GND
17	Cathode	Cathode	Remote 1
18	GND	GND	Remote 2
19	GND	GND	Remote 3
20	GND	GND	Remote 4
21	GND	GND	Remote 5
22	GND	GND	Remote 6
23	GND	GND	Remote 7
24	GND	GND	Remote 8
25	+5V (max 50mA*)	+5V (max 50mA*)	+5V (max 50mA*)

The OC outputs are rated at a maximum of 300 mA and 48 V.
The minimum switching threshold to provide logic HIGH at the remote inputs is 2 V. The maximum switching threshold to provide logic LOW is 0,8 V.

ATTENTION:

For a cable length of more than 10 m cables must be shielded.

* 50mA stand for the total power consumption at all three ports



