



VARIO CURVE

MANUAL

INDEX

GENERAL.....	3
STANDARDS, REGULATIONS AND TECHNICAL SPECIFICATION	3
SAFETY	3
OPERATION, MAINTENANCE AND SERVICE	6
WARRANTY	7
FRAME SET UP	8
CENTRE SUPPORT	9
SURFACE MOUNTING.....	10



AV Stumpfl GmbH | Mitterweg 46 | 4702 Wallern
AVstumpfl@AVstumpfl.com | www.AVstumpfl.com | +43 7249 42811

We reserve the right to make modifications in the interest of technical progress.

GENERAL

STANDARDS, REGULATIONS AND TECHNICAL SPECIFICATION

This projection screen is in accordance with the safety regulations in DIN standard 19045 and DIN 56950. The screen fabric is comply with DIN 4102 part 1 and the specifications of the according data sheet. For the technical details and projection-specific material parameters please refer to the corresponding product data sheet: www.AVstumpfl.com/projectionmaterials

Detailed data of frame components, legs and projection surface can be found on the type labels on each component and on the labeled soft bags, roller bags or flight cases.

SAFETY

GENERAL INFORMATION FOR THE MANUAL AND SAFETY

This operating manual forms part of the projection screen system and enables a safe and efficient operation. The safety section provides information about important safety aspects for the protection of persons, frame and projection materials. Task-related warnings/notes are also contained in the individual chapters. Read instructions through completely before proceeding and keep for future reference. You can find manuals electronically on our website: www.AVstumpfl.com/downloads

PACKAGING MATERIAL

WARNING

Danger of suffocation!

- Keep packaging material and foils away from children.
- Do not let children play with packaging material.



NOTICE

Unpack without cutter or any other sharp tool to avoid damaging of the projection screen. Remove packaging materials by hand. Unpack projection surface after assembling of the frame.



SET UP-ASSEMBLY

MECHANICAL HAZARDS



Danger of injury due to improper assembly. Make sure all frame parts assembled correctly and all hinges and joints are locked before raising screen to standing position. Falling parts can cause severe injury or death!

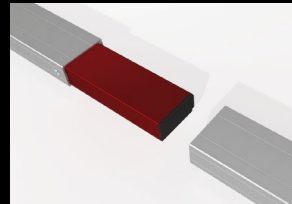
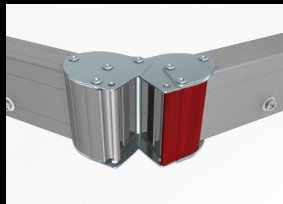
NOTICE

Projection surface damage in case of faulty assembly or set up. Make sure all frame parts assembled correctly and all hinges and joints are locked before one unfold and attach the projection surface.

FRAME AND LEG COMPONENTS



Foldable snap joints, corner hinges and plug-in connections can lead to injury to the hands (body parts). Please be careful not to pinch your fingers!



FALLING OVER



Falling over of a projection screen can cause severe injury or death!
To avoid falling over:

- Make sure that the projection screen is in level.
- Mind the maximum set-up height of the legs
- Prevent air draft
- Use additional weights on the base profile of the leg to gain higher stability.
- Do not put additional load on the screen frame!
- Do not use outdoors!

⚠ WARNING

Vario Curve systems are developed for indoor use only.
 Failure to follow warning may result in personal injury due to unforeseen acts of nature.
 Any damage and consequential damage caused by outdoor use is not covered by warranty.

BASIC SAFETY REQUIREMENTS

Basic safety requirements for „flying“ projection screens and wall- or ceiling mounting!
 If persons are able to stand under the loads, fastening points and slings must not be loaded more than half the value of the load bearing capacity stated by the manufacturer.
 When planning the event or production, not only dead loads but also dynamic forces, potential breakdown loads and additional loads during operation, as well as during assembly and dismantling must be taken into account.

Observe the local safety regulations!

FLYING SCREEN

If a modular projection screen is used as a “flying” (free hanging) screen, then all plug-in and clamp connections must be secured against becoming loose and falling.
 It is not allowed to use the projection surface holding the frame parts in position!
 Falling parts can cause severe injury or death!
 Please make sure that all components are secured safely before raising screen to standing position and lifting. Use the necessary number of suspension points (e.g.: EasyFly) according to the overall system weight. A second/auxiliary safeguarding system is mandatory (e.g. steel rope catch)
 Please follow the detailed instruction in the manual.

⚠ WARNING

Falling parts

It is not allowed to use the projection surface holding the frame parts in position! Falling projection screens or parts can cause severe injury or death!

WALL MOUNTING

Before mounting, make sure that the wall, as well as the fixing points meet the safety requirements of the local standards and the required load can be beared.

⚠ WARNING

Falling parts

Danger of injury due to improper disassembly.
 Falling parts can cause severe injury or death!

⚠ CAUTION

Please be careful not to pinch your fingers!

Beware of pinch points.

DISASSEMBLY

For disassembly the same safety instructions apply as for assembly and set up. Bring down a projection screen with the appropriate number of people to avoid falling over of the screen.



**Falling
parts**

Danger of injury due to improper disassembly. Falling parts can cause severe injury or death!



Please be careful not to pinch your fingers!

Beware of pinch points.

OPERATION, MAINTENANCE AND SERVICE

FRAME ELEMENTS, LEGS AND ACCESSORIES

The frame elements, legs and additional elements are maintenance-free.

PROJECTION SURFACE

PACKAGING AND STORAGE

The projection surface is rolled on a tube with foam intermediate layer and depending on size packed in a cardboard box or transport tube, to avoid any damage by the frame parts, bleaching and discoloration. After use, the projection surface must be rolled up, identical to the delivery condition, with the foam intermediate layer and with the projection side inwards in order to avoid soiling and damage to the surface. The surface must be rolled up in such a way that the reinforced black border with the caps and hooks never gets in contact with the projection area. Insert the enclosed foamed plastic foil between the caps and hooks and the projection area to avoid permanent marks. Incorrect storage can damage and discolor the surface and is not covered by the guarantee.

NOTICE

Additionally, following instructions have to be adhered to:

- Do not allow the projection surface to get in contact with sharp objects!
- Do not bring printed and coloring objects (instructions, magazines, etc.) in contact with the surface!
- Do not write on the projection surface!
- Colors penetrate the projection surface and cannot be cleaned anymore!
- Store the projection surface cleaned and dry at room temperature only!

COLD BREAK

A projection foil must never be stored or transported below 5° C. There is a risk of a cold break! The film becomes very brittle and splinters like glass! When transporting the projection surface at low temperatures do not unroll the surface unless it has reached its full elasticity at room temperature. Otherwise there is the risk of cold break of the projection screen.

The ideal temperature range to prevent damaging the surface during surface attachment is 54°-82° F (12°-28° C). Assembling below recommended temperatures may damage surface and void warranty.

CLEANING OF THE PROJECTION SURFACE

Use a white clean cotton cloth saturated with clear water (optionally mild soap water) and gently wipe the area in one direction (no circular motion). Wipe dry with another cotton cloth. To clean a stubborn stain, use methylated spirit and follow the same procedure. Clean rear projection surfaces in case of imperative only!

WARRANTY

The warranty period for production deficiencies is 5 years for the frame elements and 24 months for the projection surface.

NOTICE

Mobile projection screens are developed for indoor use only.
Any damage and consequential damage caused by outdoor use is not covered by warranty.

The general terms and conditions are available at www.AVstumpfl.com/agb

LIMITATION OF LIABILITY

All the details in this manual were compiled in consideration of the standards and legal regulations applicable at this time, as well as the experience of the manufacturer and qualified staff. The manufacturer accepts no liability for damage to persons or things (projection screen, other devices, goods, etc.) resulting from:

- Non-observance of the manual and the regulations/safety instructions contained therein.
- Failure to comply with the local safety regulations.
- Inappropriate use (misuse).
- Use of unauthorized and non-trained staff.
- Unauthorized equipment conversions and technical modifications by the operator himself.
- Use of spare parts not approved by the manufacturer.
- Typesetting and print errors.

Failure to observe the above points will invalidate the warranty claims.
Technical specifications are subject to change without notice.

The local regulations and safety regulations and the essential safety requirements apply for the use of this projection screen.

DISPOSAL

At the end of its lifetime this product must not be disposed of with normal household waste but needs to be taken to a collection site for recycling.

Separate disposal of the product makes an important contribution towards environmental protection.

Frame components and legs are made of aluminum and steel.

The projection material is PVC vinyl.

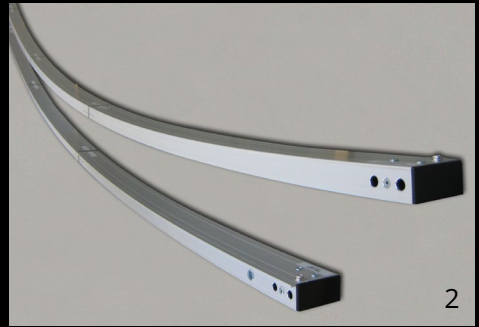
Contact your local disposal company for the address of a collection center.

SUBJECT TO MODIFICATIONS, ERRORS EXPECTED !

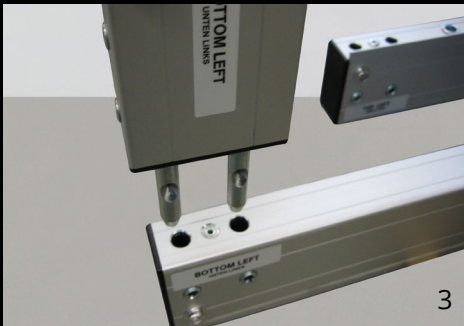
FRAME SET UP

Required tools:

- 3-5 ladders
- 4mm Allen key



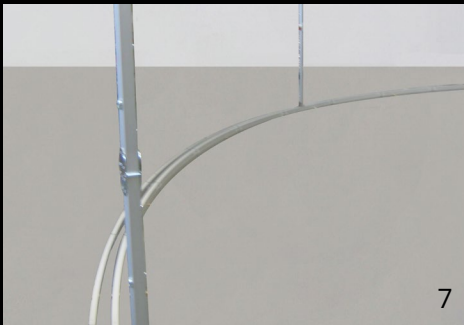
1-2 Assemble the upper and lower horizontal elements according to the numbering and fasten them (1 Nm).



3-4 Unfold the lateral vertical elements and plug them with the lower horizontal corner elements according to the labeling and tighten the thread bolts with the allen key.

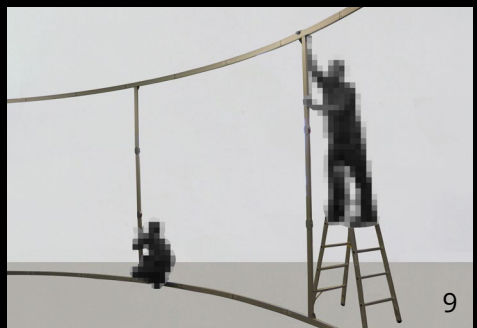
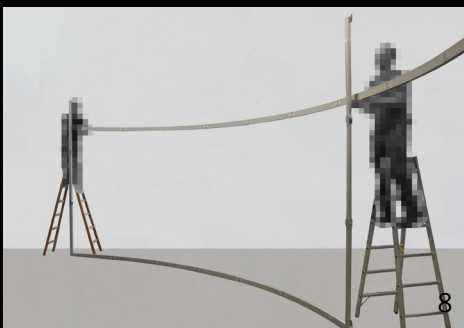
⚠ CAUTION Beware of pinch points!

CENTRE SUPPORT



5-7 Unfold the center support and bolt them to the lower horizontal frame section according to the labeling with the enclosed wing screws.

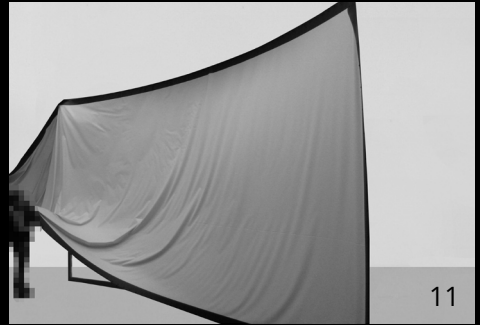
⚠ CAUTION Beware of pinch points!



8-9 Attach the upper frame section to the top end of the vertical frame sections with at least 3 people.

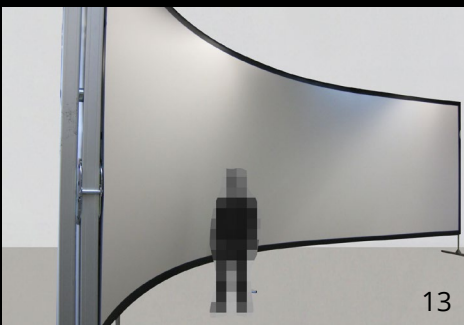
⚠ WARNING Falling parts!

SURFACE MOUNTING



10-12 Unroll the projection surface with, according to the screen size appropriate number of people and hook it onto the rail of the upper horizontal frame section and slide it with several people gently till the opposite corner.

⚠ WARNING Falling parts!



13 Now attach the snap fasteners on the lateral sides. To attach the hooks to the lower frame bar easily, it is recommended to set up the projection screen on T-Legs, or at least to raise the screen a bit with squared timbers.